



eular

Agenda

The EULAR Brussels Forum 2020

Live Broadcast: **12 October 2020** 14.00 – 15.30 CET

'Employment risks and impacts for Europeans with RMDs during the COVID-19 recession.'

Time	Topic	Moderator/Panellists
14:00	Welcome and introduction to the agenda	
14:03	Introductory comments on the 'employment risks and impact for Europeans with RMDs during the COVID-19 recession'	Prof. Iain B. McInnes, EULAR President
14:12	Panel 1: Challenges and solutions for people with RMDs to access, remain in, and return to work in the COVID-19 recession	Peter Boyd, EULAR PARE Sarah Copsey, Project Manager, Prevention and Research Unit, EU OSHA Dr. Johanna Callhoff, German Rheumatism Research Center (DRFZ) Prof. Olivia Wu, William R Lindsay Chair of Health Economics, Glasgow University
14:52	Panel 2: The role of the European Union in increasing access to work for people living with RMDs	Dr. Francisco Jesús Alvarez Hidalgo, European Commission, DG Employment, Social Affairs and Inclusion Roberta Metsola, Member of the European Parliament Prof. Iain B. McInnes, CBE, EULAR President
13:20	Closing remarks	Cathy Smith (moderator) and Prof. Iain B. McInnes
13:30	Event Finishes	



Moderator

Cathy Smith

Panellists

Prof. Iain B. McInnes, CBE, EULAR President

Iain McInnes is a global leader in the field of arthritis research. He is Muirhead Professor of Medicine and Versus Arthritis Professor of Rheumatology in the University of Glasgow. Over two decades, he has led numerous clinical trials and pathogenesis investigation programmes in inflammatory arthritis at the international level. He leads the European Roadmap programme that is defining the research agenda for European rheumatology for the next decade and in 2019 became President of EULAR.



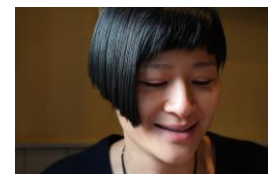
Peter Boyd, Arthritis Ireland and Member of the People with Arthritis and Rheumatism in Europe at EULAR

Peter Boyd was diagnosed with rheumatoid arthritis and fibromyalgia in 2011 and began volunteering almost immediately across all Arthritis Ireland services. Peter was a Trustee of EULAR Young Patients from 2016-2020, advocating on behalf of patients across Ireland and Europe, and began working with Arthritis Ireland, which added to his work in sports media and voluntary roles with EULAR PARE.



Prof. Olivia Wu, William R Lindsay Chair of Health Economics, Glasgow University

Olivia Wu holds the William R Lindsay Chair of Health Economics at the University of Glasgow and is Director of the Health Economics and Health Technology Assessment Research Unit. Her research interest focuses on the areas of evidence synthesis, and the use of evidence synthesis in the context of economic evaluation and health technology assessment. In addition to her research, Olivia is Deputy Chair of the National Institute for Health Research Clinical Evaluation and Trials Committee and a member of the National Institute for Health and Care Excellence Technology Appraisal Committee.



Sarah Copsey, Prevention and Research Unit, European Agency for Safety and Health at Work (EU-OSHA)

Sarah has been employed as a project manager for the European Agency for Safety and Health at Work (EU-OSHA) since 1998. Her recent work has been as coordinator of a major project on the ageing workforce and currently as a team member of the large-scale research activity on musculoskeletal disorders, where she is responsible for the area of working with chronic MSDs. Sarah's academic background is in psychology and ergonomics.



Roberta Metsola, Member of the European Parliament

Roberta Metsola is a member of Group of the European People's Party and sits on the Committee on Civil Liberties, Justice and Home Affairs. She was first elected to the European Parliament in 2013, becoming one of Malta's first female Members of the European Parliament. Professionally she is a lawyer who has specialised in European law and politics.



Dr. Francisco Jesús Álvarez Hidalgo, European Commission, DG Employment, Social Affairs and Inclusion

F. Jesús Álvarez Hidalgo serves as a Policy Officer at the Health and Safety Unit of the European Commission, DG EMPL, in Luxembourg. He is in charge of the relations with the European Agency for Safety and Health at Work (EU-OSHA) and also manages public health issues related to the workplace. Dr. Álvarez is a Medical Doctor with more than 25 years' worth of experience in the field. Before joining the Commission he served as a doctor at Emergency Services, as a Medical Inspector of Social Security and as a Director of several public hospitals in Spain.



Dr. Johanna Callhoff, German Rheumatism Research Centre (DRFZ)

Dr Callhoff is a Senior Scientist in the Health Services Research Working Group in the Epidemiology Unit of the German Rheumatism Research Centre (DRFZ). She worked previously in the DRFZ's Clinical Studies and Early Arthritis Cohorts Working Groups. Dr Callhoff is also currently the Head of the National Database and Head of Statistics of the National Database of the German Collaborative Arthritis Centres.

